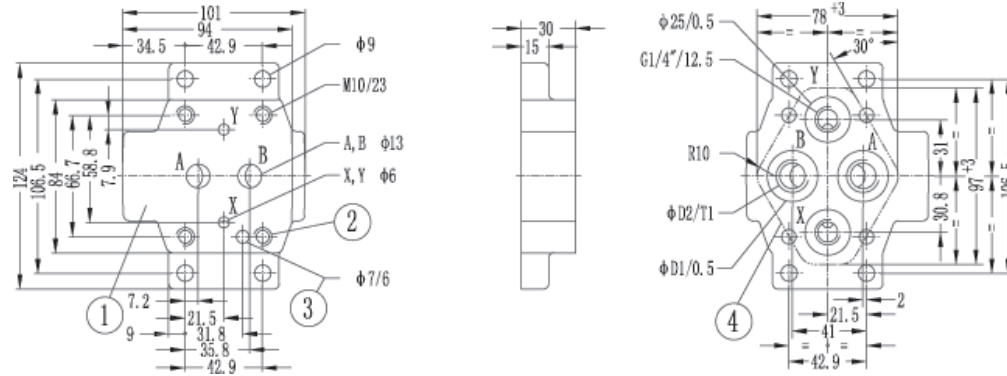


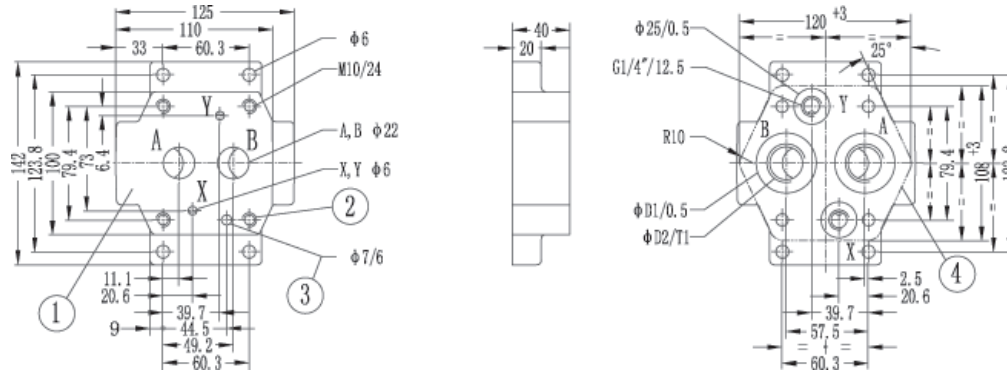


Catálogo de Productos

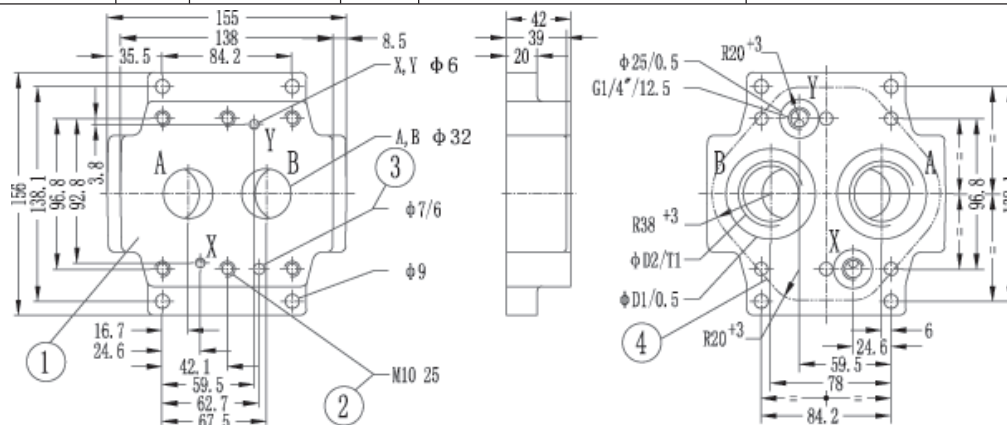
Subplates



Size	Type	D1	D2	T1	Valve fixing screws	Tightening torque for screws	Weight
NG10	G460/01	28	G3/8"	13	4 - M10 × 40 -10.9 (GB/T70.1-2000)	69Nm	1.7kg
	G460/02		M18 × 1.5				
	G461/01	34	G1/2"	16			
	G461/02		M22 × 1.5				



Size	Type	D1	D2	T1	Valve fixing screws	Tightening torque for screws	Weight
NG25	G412/01	42	G3/4"	17	4 - M10 × 50 -10.9 (GB/T70.1-2000)	69Nm	3.3kg
	G412/02		M27 × 2				
	G413/01	47	G1"	20			
	G413/02		M33 × 2				



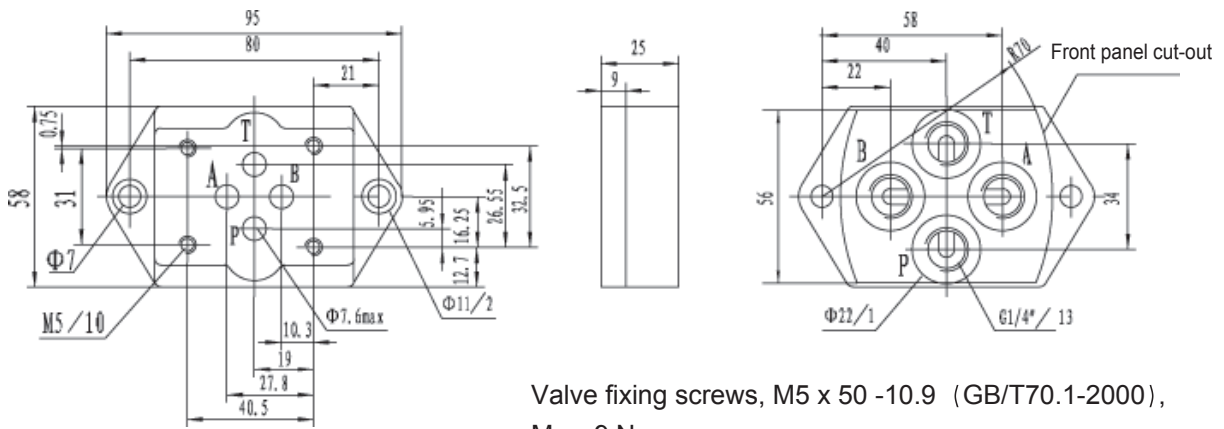
Size	Type	D1	D2	T1	Valve fixing screws	Tightening torque for screws	Weight
NG32	G414/01	56	G1 1/4"	20.5	6 - M10 × 60 -10.9 (GB/T70.1-2000)	69Nm	5kg
	G414/02		M42 × 2				
	G415/01	61	G1 1/2"	22.5			
	G415/02		M48 × 2				

1 mating piece of valve 2 Valve fixing screws 3 locating pin 4 Front panel cut-out

Subplates

G341/01 (G1/4") G341/02 (M14x1.5) Weight ≈ 0.6kg

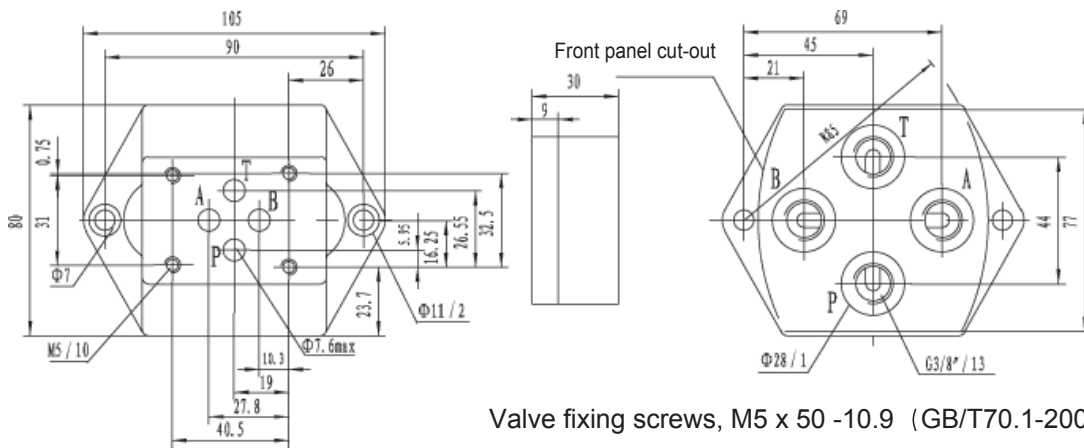
(Dimensions in mm)



Valve fixing screws, M5 x 50 -10.9 (GB/T70.1-2000),
 $M_A = 9 \text{ Nm}$

G342/01 (G3/8") G342/02 (M18x1.5) Weight ≈ 1.1kg

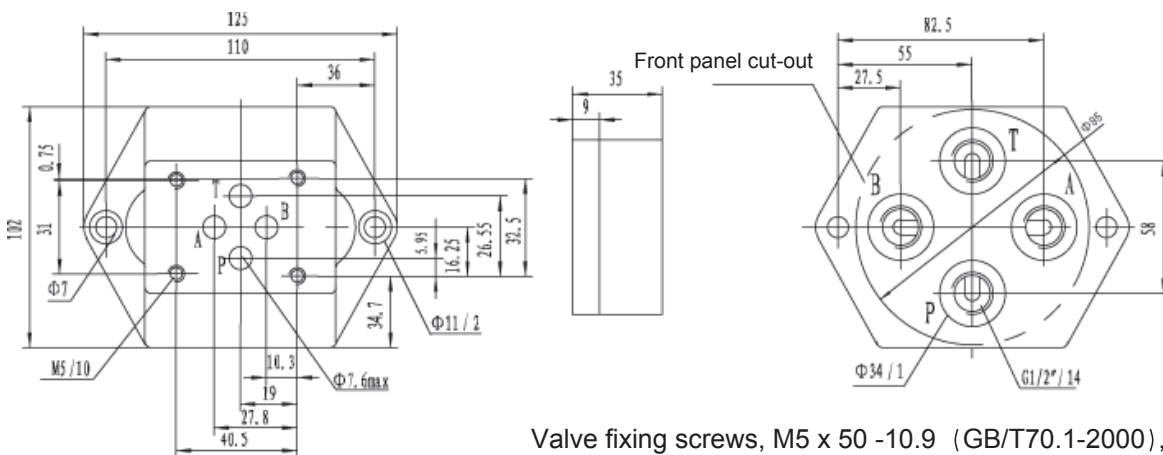
(Dimensions in mm)



Valve fixing screws, M5 x 50 -10.9 (GB/T70.1-2000),
 $M_A = 9 \text{ Nm}$

G502/01 (G1/2") G502/02 (M22x1.5) Weight ≈ 1.9kg

(Dimensions in mm)

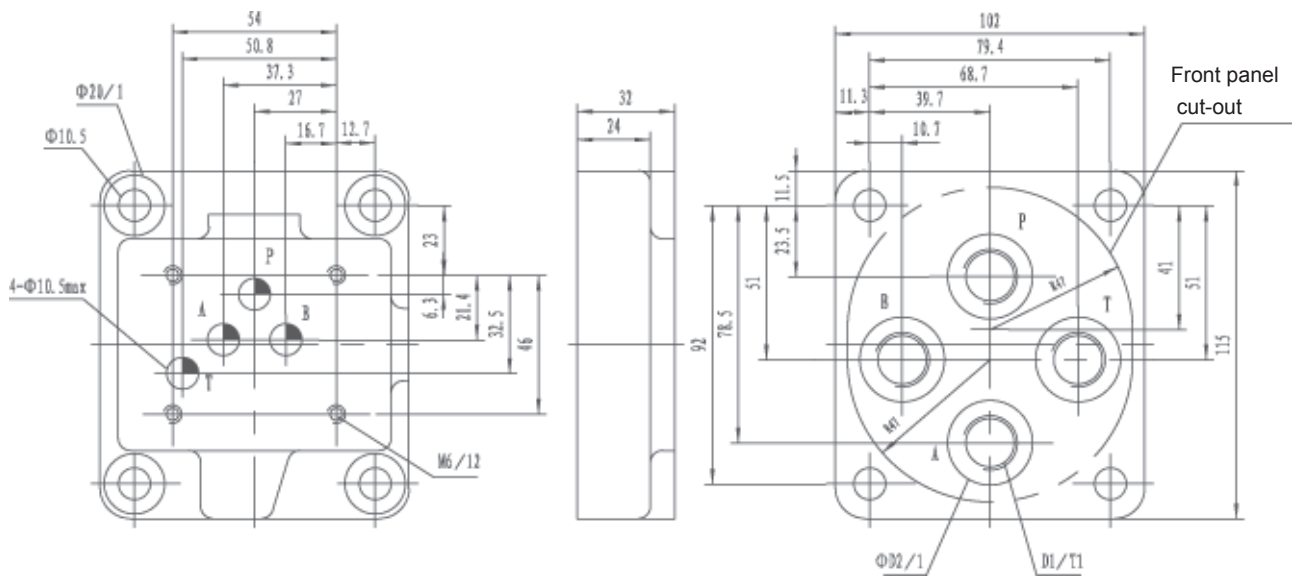


Valve fixing screws, M5 x 50 -10.9 (GB/T70.1-2000),
 $M_A = 9 \text{ Nm}$

Subplates

G66/01 G66/02 G67/01 G67/02

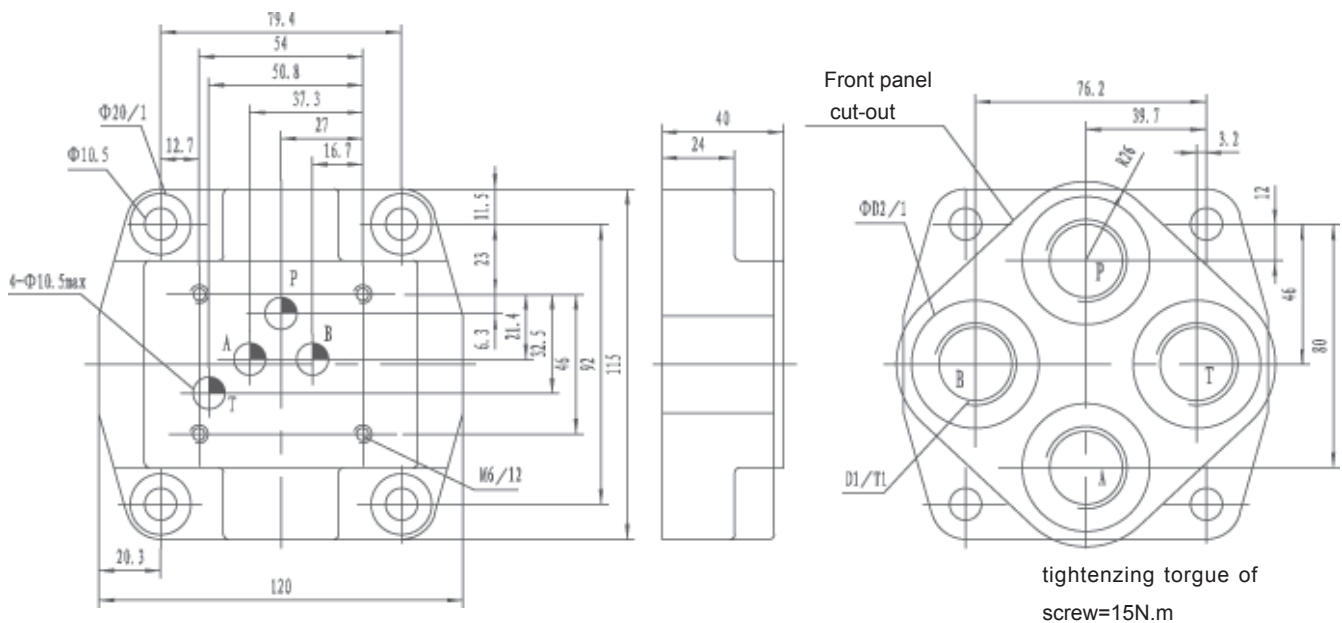
(Dimensions in mm)



Type	D1	T1	Φ D2	Weight	Valve fixing screws	Tightening torque for screws
G66/01	G3/8"	12	28	approx.	4 - M6 × 50 -10.9 (GB/T70.1-2000), Should be ordered seperately.	15N.m
G66/02	M18x1.5					
G67/01	G1/2"	14	34	2.3Kg		
G67/02	M22x1.5					

G534/01 G534/02

(Dimensions in mm)

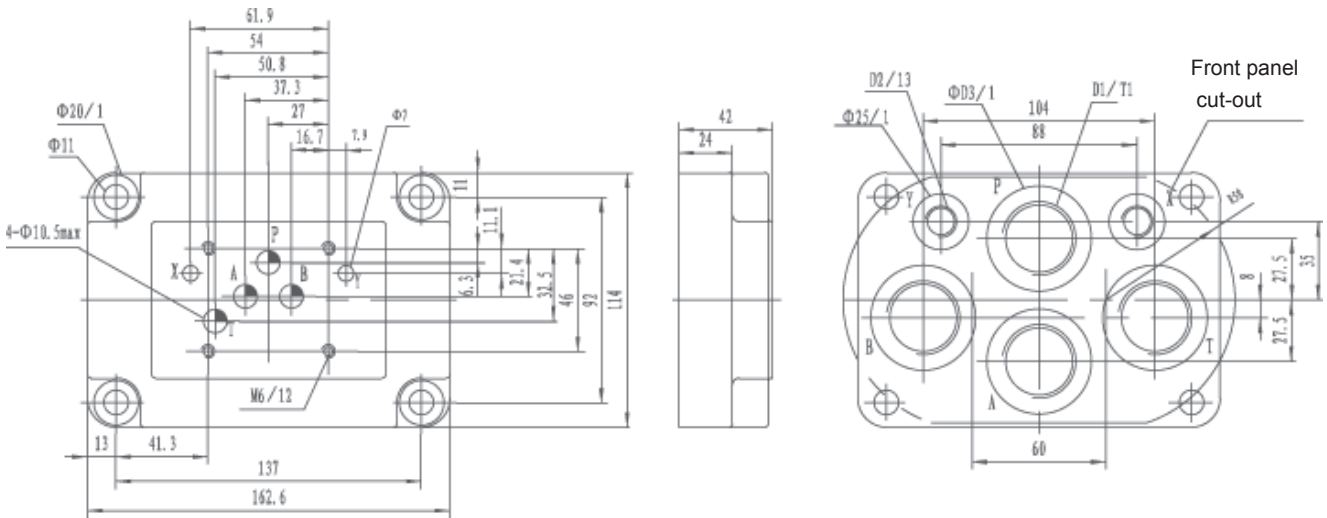


Type	D1	T1	Φ D2	Weight	Valve fixing screws	Tightening torque for screws
G534/01	G3/4"	17	42	approx. 2.5Kg	4 - M6 × 50-10.9 (GB/T70.1-2000), Should be ordered separately.	15N.m
G534/02	M27x2					

Subplates

G535/01 G535/02 G536/01 G536/02

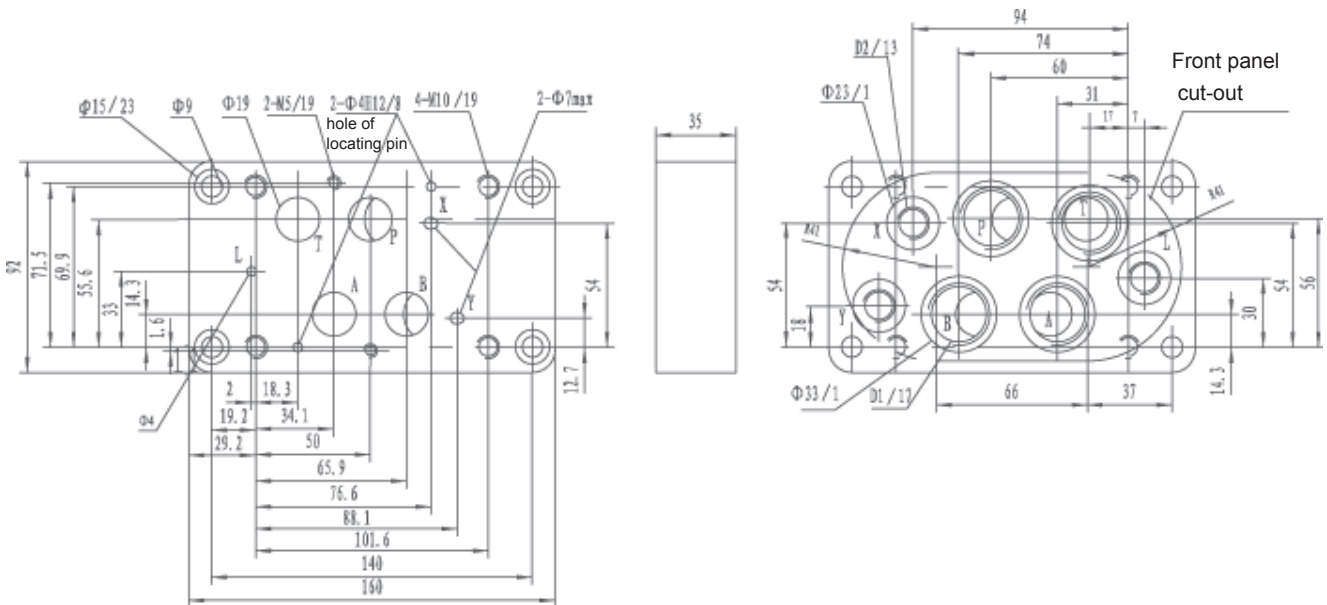
(Dimensions in mm)



Type	D1	T1	D2	φ D3	Weight	Valve fixing screws	Tightening torque for screws
G535/01	G3/4"	16	G1/4"	42	approx. 3.6Kg	4 - M6 × 45 -10.9 (GB/T70.1-2000) Should be ordered separately.	15N.m
G535/02	M27x2		M14x1.5				
G536/01	G1"	18	G1/4"	47			
G536/02	M33x2		M14x1.5				

G172/01 G172/02

(Dimensions in mm)

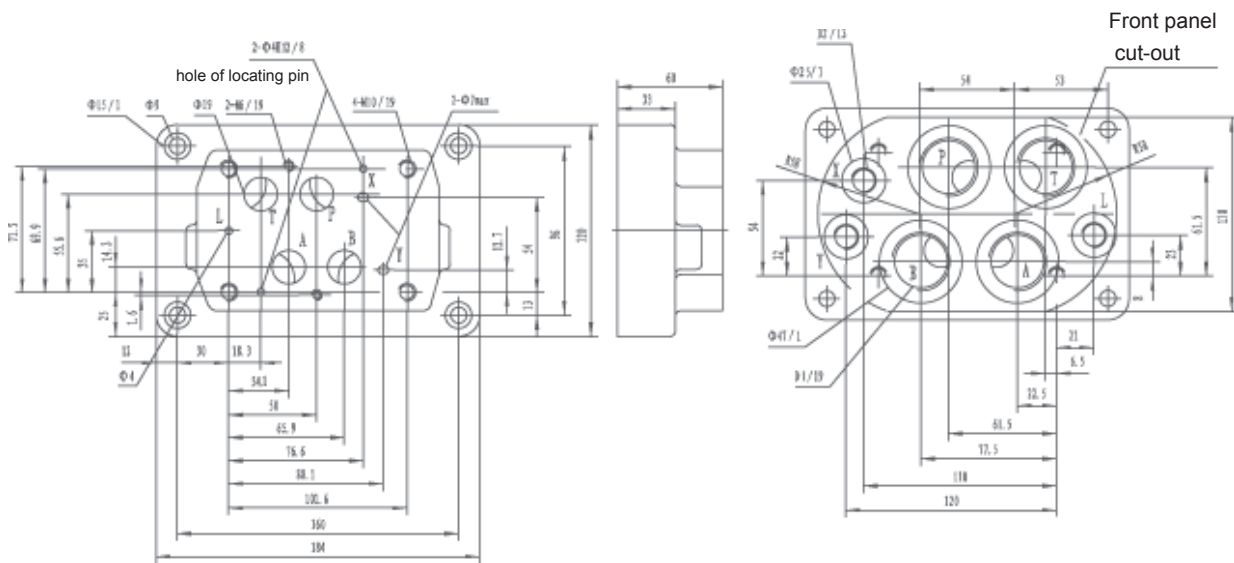


Type	D1	D2	Weight	Valve fixing screws	Tightening torque for screws
G172/01	G3/4"	G1/4"	approx.	4 - M10 × 60 -10.9 (GB/T70.1-2000), Should be ordered separately.	62N.m
G172/02	M27x2	M14x1.5	2.8kg	2 - M6 × 60 --10.9 (GB/T70.1-2000), Should be ordered separately.	12.5N.m

Subplates

G174/01 G174/02

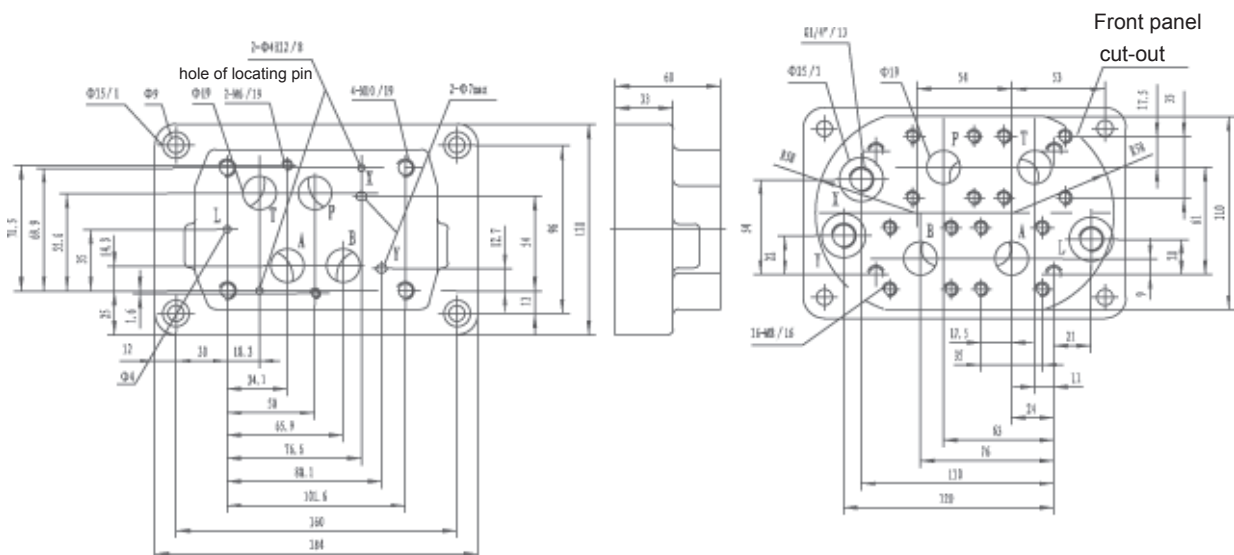
(Dimensions in mm)



Type	D1	D2	Weight	Valve fixing screws	Tightening torque for screws
G174/01	G1"	G1/4"	approx.	4 - M10 × 60-10.9 (GB/T70.1-2000), Should be ordered separately.	62N.m
G174/02	M33x2	M14x1.5	5.5kg	2 - M6 × 60-10.9 (GB/T70.1-2000), Should be ordered separately.	12.5N.m

G174/08

(Dimensions in mm)

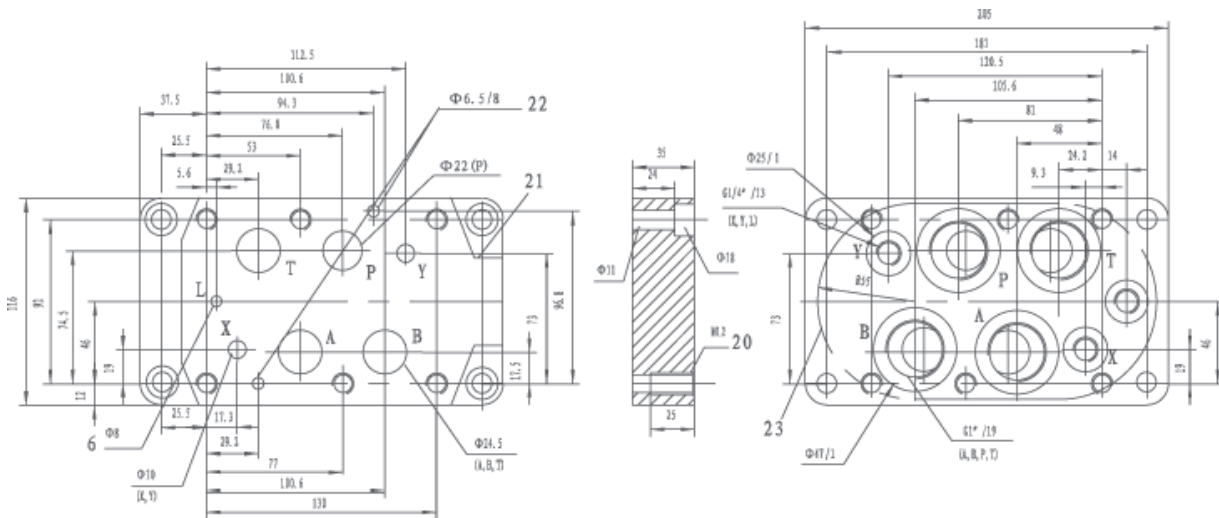


Type	Pressure	Type	Weight	Valve fixing screws	Tightening torque for screws
G174/08	25MPa	009 271	approx.	4 - M10 × 60-10.9 (GB/T70.1-2000), Should be ordered separately.	62N.m
	40MPa	009 272	5.5kg	2 - M6 × 60-10.9 (GB/T70.1-2000), Should be ordered separately.	12.5N.m

Subplates

G151/01(G1")G151/02(M33x2):G153/01(G1") G153/02(M33x2)

(Dimensions in mm)



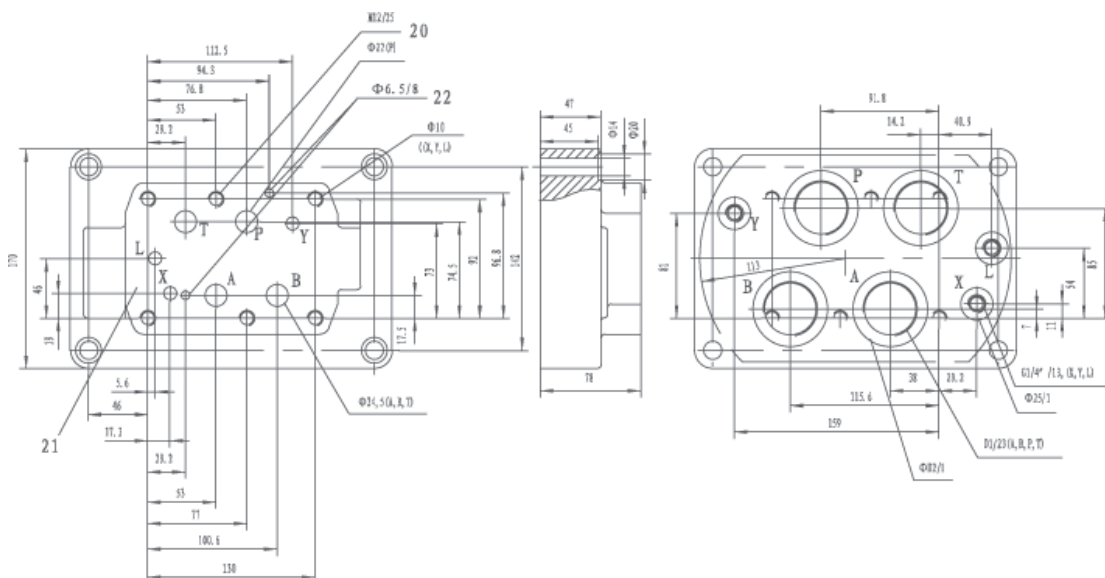
L of ϕ 8 only used on G153/01

Size	Type	Weight	Valve fixing screws	Tightening torque for screws
NG25	G151/01	5kg	6 - M12x60-10.9 (GB/T70.1-2000),	105Nm
	G151/02			
	G153/01			
	G153/02			

1) Only used on valves which are pressure-centred

G154/01(G1 1/4");G154/02(M42x2):G156/01 G156/02(M48x2)

(Dimensions in mm)



L only used on valves which are pressure-centred

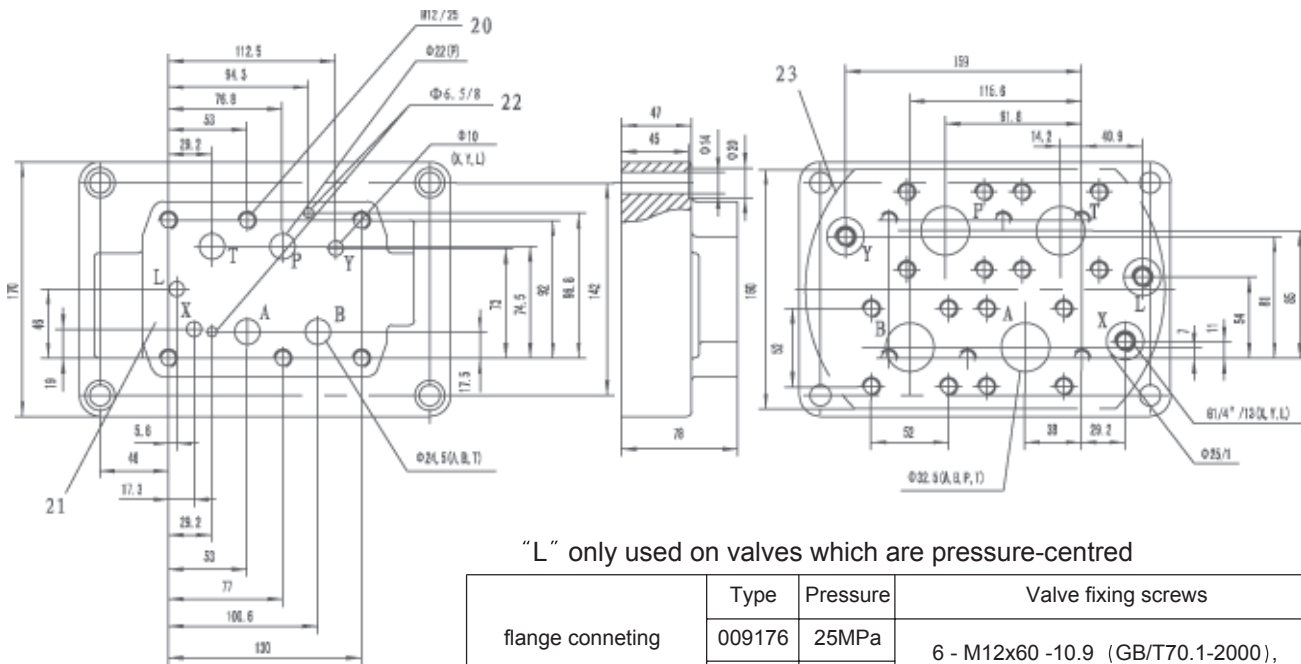
Size	Type	Weight	D1	D2	Valve fixing screws	Tightening torque for screws
NG25	G154/01	5kg	G1 1/4"	58	6 - M12x60 -10.9 (GB/T70.1-2000)	105Nm
	G154/02		M42x2			
	G156/01		G1 1/2"	65		
	G156/02		M48x2			

20 Valve fixing screws 21 mating piece of valve 22 locating pin 23 Front panel cut-out

Subplates

G154/08 flange connection

(Dimensions in mm)



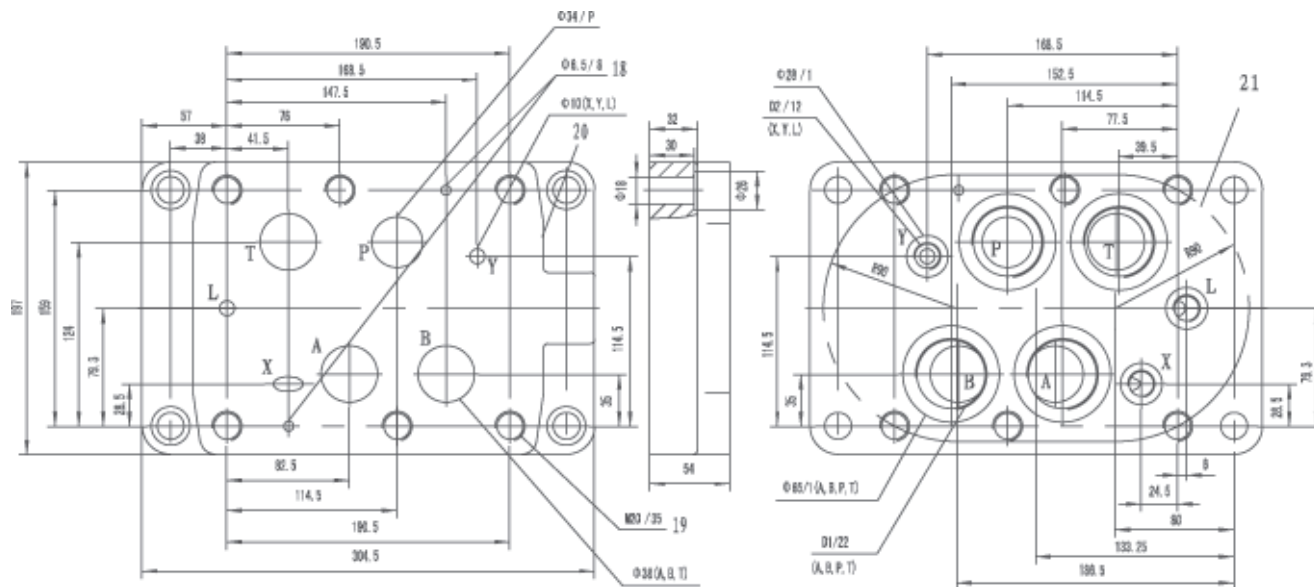
“L” only used on valves which are pressure-centred

flange conneting	Type	Pressure	Valve fixing screws
	009176	25MPa	6 - M12x60 -10.9 (GB/T70.1-2000),
	009177	40MPa	

20 Valve fixing screws 21 mating piece of valve 22 locating pin 23 Front panel cut-out

G157/01(G1 1/2");G157/02(M48 × 2)

(Dimensions in mm)



“L” only used on valves which are pressure-centred

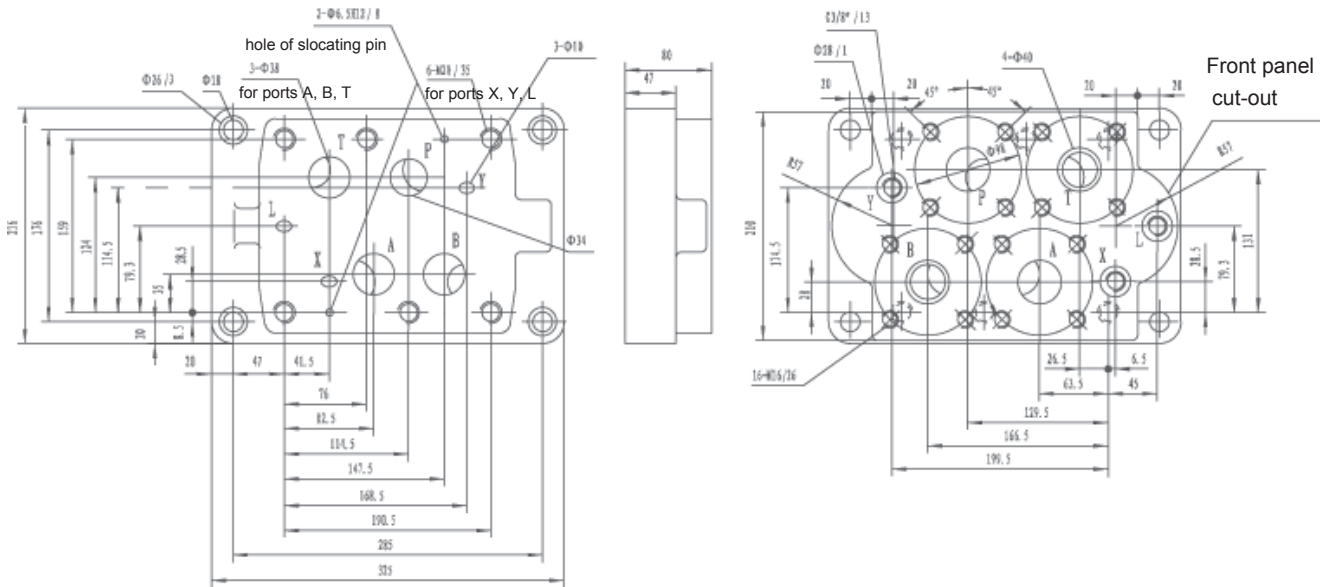
Type	Weight	D1	D2	Valve fixing screws	Tightening torque for screws
G157/01	18kg	G1 1/2"	G3/2"	6 - M12x60-10.9 (GB/T70.1-2000)	105Nm
G157/02		M48x2	M18x1.5		

18 locating pin 19 Valve fixing screws 20 mating piece of valve 21 Front panel cut-out

Subplates

G158/10 flange connection

(Dimensions in mm)



“L” only used on valves which are pressure-centred

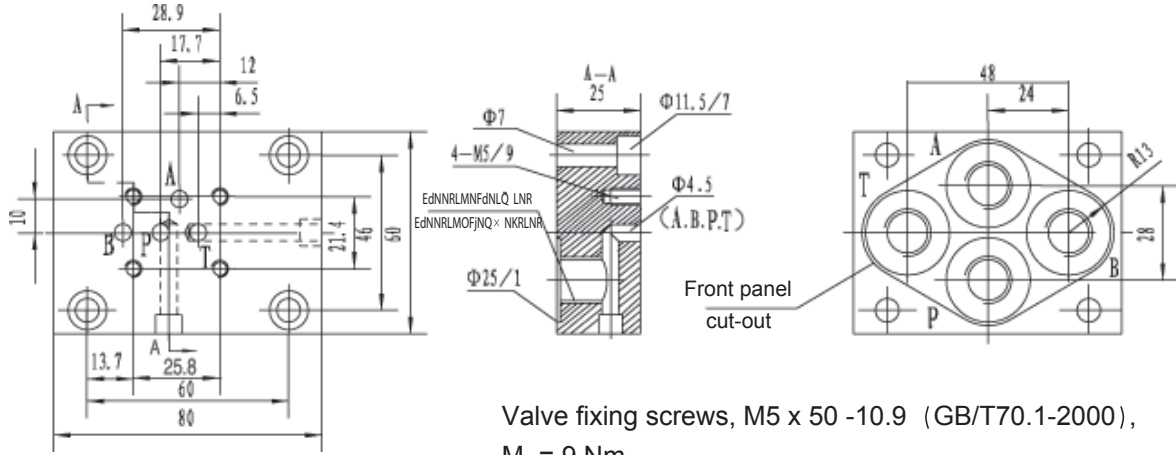
Type	Pressure	Type	Weight	Valve fixing screws	Tightening torque for screws
G158/10	165MPa	303 901	approx. 30.5kg	6 - M20 × 80 -10.9 (GB/T70.1-2000), Should be ordered seperately.	580N.m
	to 25MPa	303 902			
	to 40MPa	303 903			

Subplates

For applications outside these parameters, please consult us!

G115/01 (G1/4") G115/02 (M14x1.5)

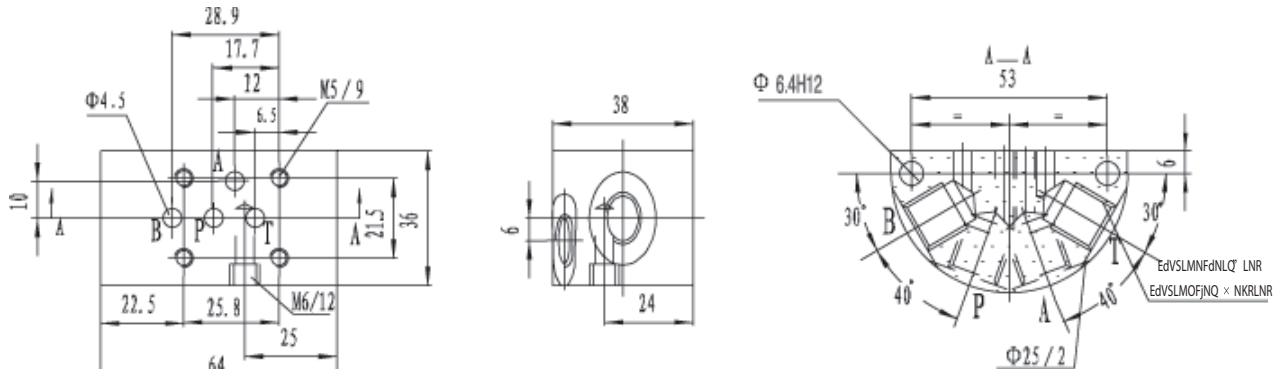
(Dimensions in mm)



Valve fixing screws, M5 x 50 -10.9 (GB/T70.1-2000),
 $M_A = 9 \text{ Nm}$

G96/01 (G1/4") G96/02 (M14x1.5)

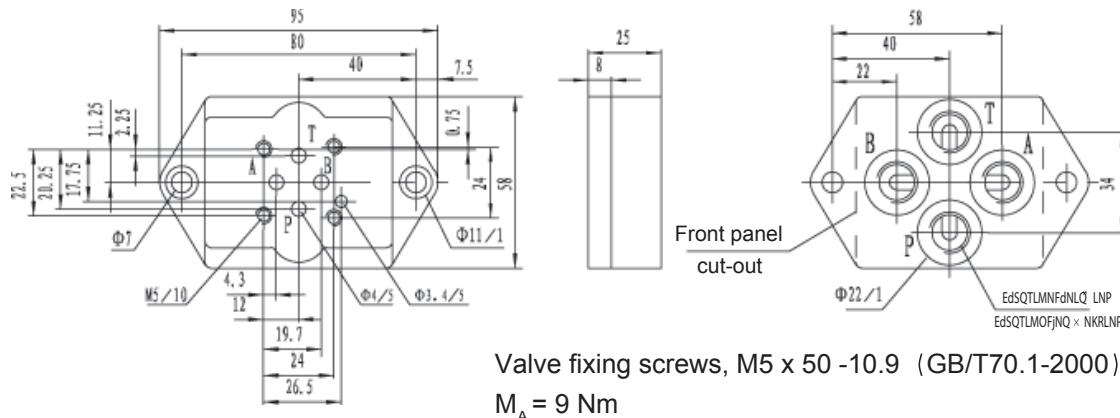
(Dimensions in mm)



Valve fixing screws, M5 x 50 -10.9 (GB/T70.1-2000),
 $M_A = 9 \text{ Nm}$

G647/01 (G1/4") G647/02 (M14x1.5)

(Dimensions in mm)



Valve fixing screws, M5 x 50 -10.9 (GB/T70.1-2000),
 $M_A = 9 \text{ Nm}$

ANNOTATIONS :

HUADE AMÉRICA

CEP : 03162-020

RUA HIPÓDROMO 1445 – MOOCA, SÃO PAULO, SP, BRASIL

TEL : (11) 3186-5959

huade@huade.com.br

www.huade.com.br