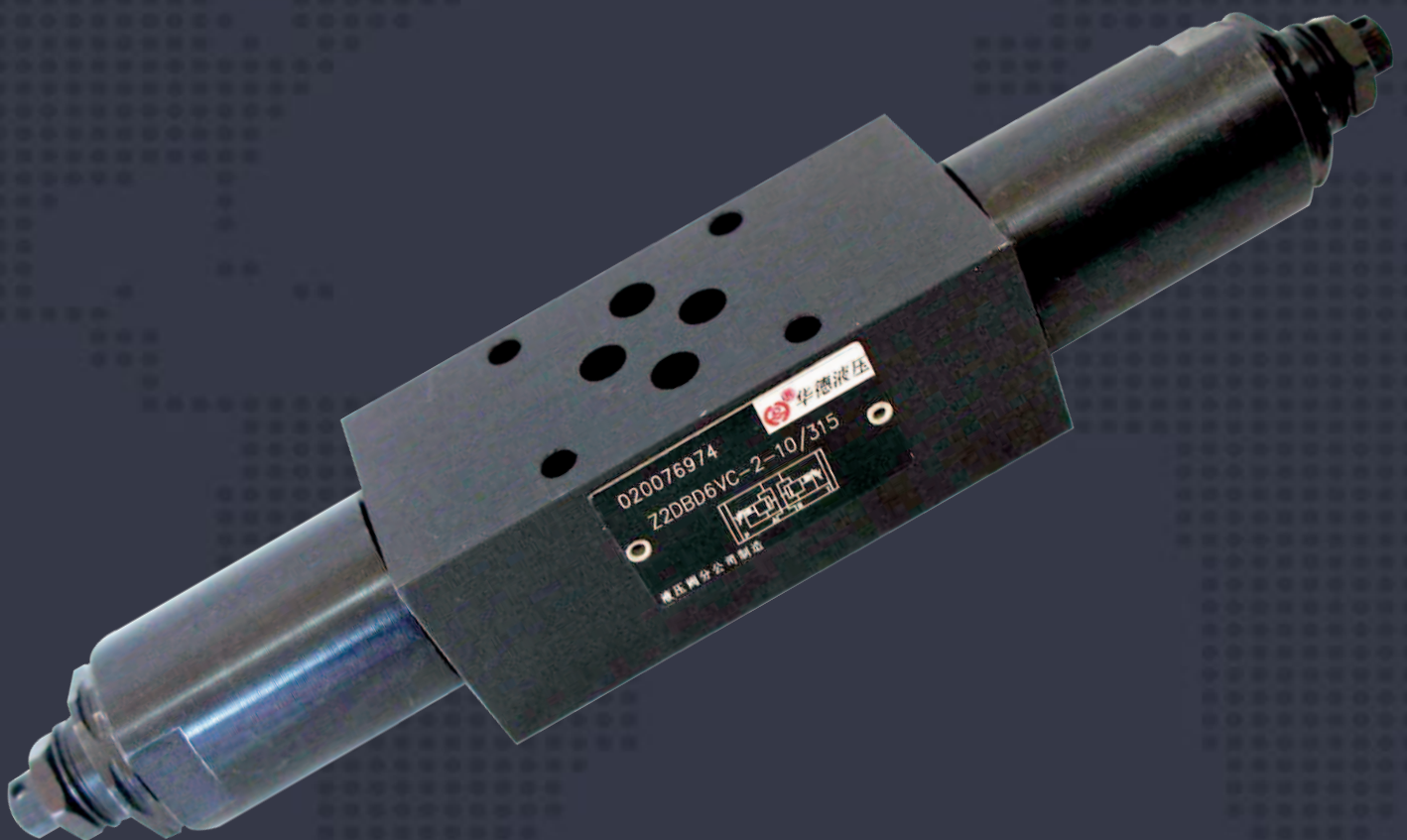




## Catálogo de Productos



Direct operated pressure relief valve, sandwich plate, type Z2DBD6

Size 6	up to 31.5 MPa	up to 35 L/min
--------	----------------	----------------

**Features:**

- Sandwich plate valve
- With one or two pressure relief cartridges



**Functional, section,symbol**

Pressure relief valve type Z2DBD6 is pilot operated and is of sandwich plate design.

They are used to limit the pressure within a hydraulic system.

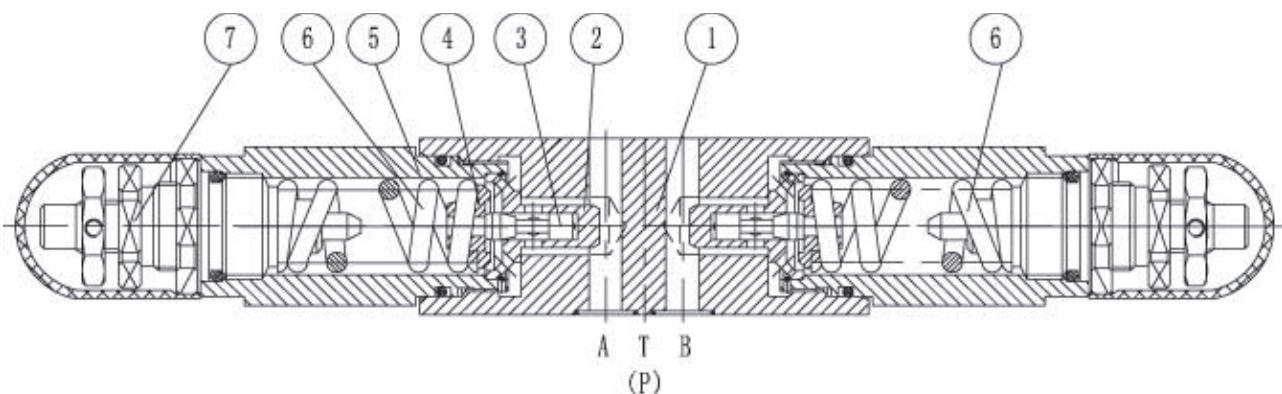
They basically consist of the housing (1), together with two pressure relief valve cartridges.

The system pressure is set by means of adjustment element (7).

At rest, the valve is closed. Pressure in port A (or B) acts on the spool (3).

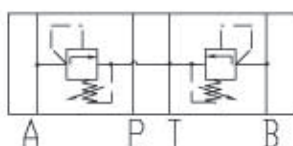
If the pressure in port A rises above the pressure set on spring (6), the spool (3) opens, fluid can now flows from a channel into port T.

Similarly,the mode is apply to port B.



Type Z2DBD6

Symbol



## Ordering code

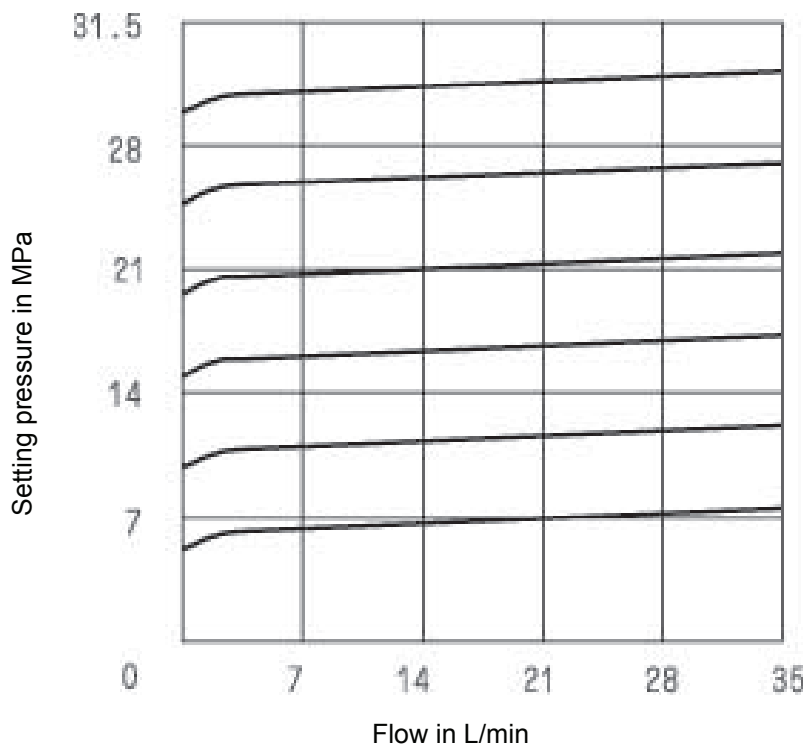
Z	2	DBD	6	VC-		-10	B	/			*
Sandwich plate = Z										Further details in clear text	
With 2 pressure relief valve cartridges = 2										No code = mineral oils V = phosphate ester	
Pressure relief valve, direct operated = DBD										100 = Pressure adjustable up to 10 MPa 200 = Pressure adjustable up to 20 MPa 315 = Pressure adjustable up to 31.5 MPa	
Nominal size 6 = 6										B = Technology of Beijing Huade Hydraulic	
Relief function form: A - T and B - T = VC											
Adjustment element											
Rotary knob =1											
Sleeve with hexagon and protective cap =2											
Lockable rotary knob with scale =3											
Series 10 to 19 = 10 (10 to 19 = unchanged installation and connection dimensions)											

## Technical data (for applications outside these parameters, please consult us!)

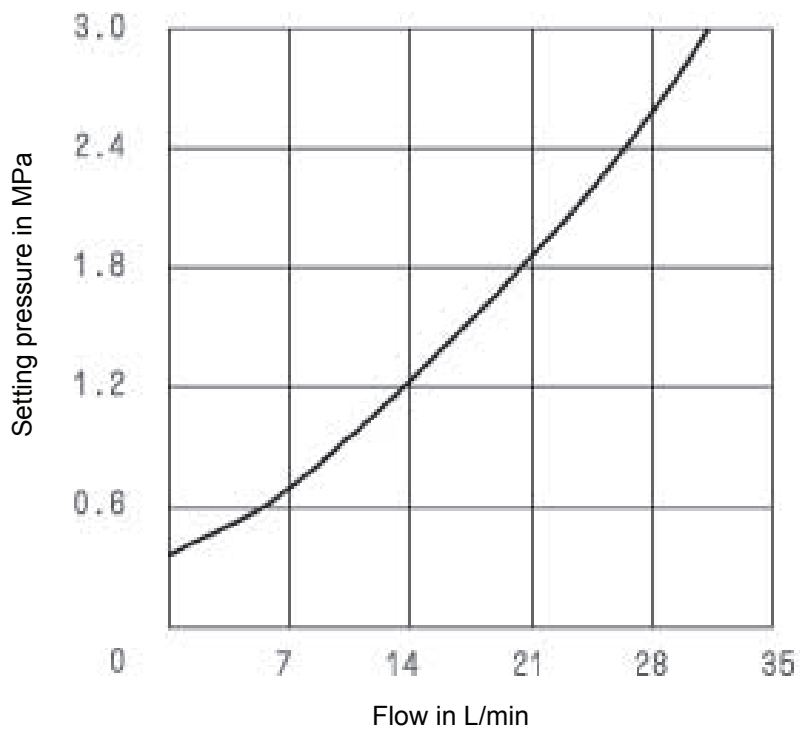
Operating pressure, max. (MPa)	up to 31.5
Viscosity range (mm <sup>2</sup> /s)	10-800
Flow, max. (L/min)	up to 35
Pressure fluid	Mineral oil (for NBR seal) or phosphate ester (for FPM seal)
Pressure fluid temperature range (°C)	-30 to +80
Degree of fluid contamination	Maximum permissible degree of contamination of the fluid is to NAS 1638, class 9. $\beta_{10} \geq 75$

**Characteristic curves** (measured at  $v = 41 \text{ mm}^2/\text{s}$  and  $t = 50^\circ\text{C}$ )

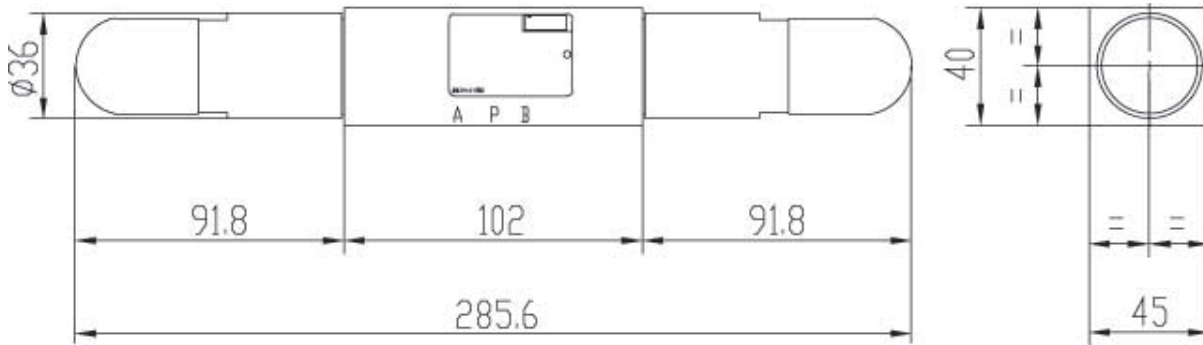
Pressure-flow characteristic curve



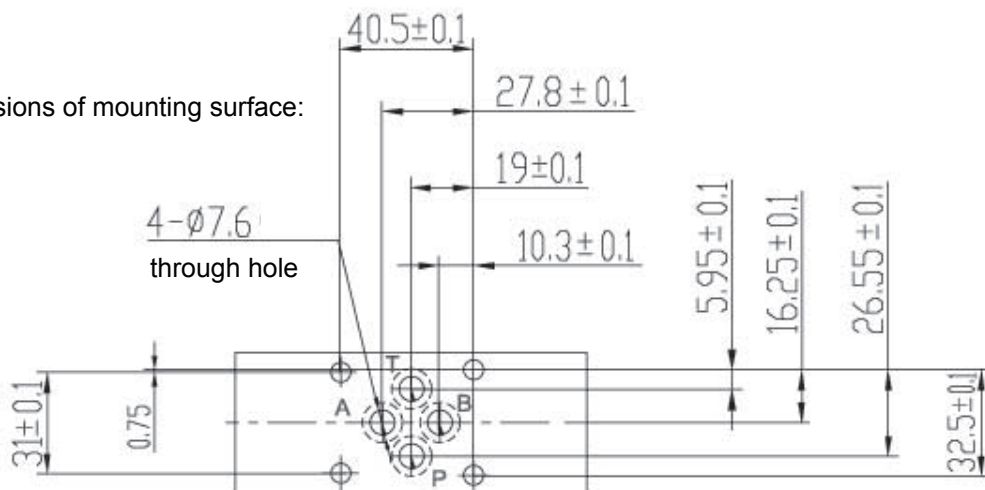
Min.pressure-flow characteristic curve



Type Z2DBD6VC-2-10B/...



Dimensions of mounting surface:



Size	O-rings for port A, B, P, T
6	9.25X1.78

Required surface finish of mating piece



## **ANNOTATIONS :**

---

### **HUADE AMÉRICA**

CEP : 03162-020

RUA HIPÓDROMO 1445 – MOOCA, SÃO PAULO, SP, BRASIL

TEL : (11) 3186-5959

[huade@huade.com.br](mailto:huade@huade.com.br)

[www.huade.com.br](http://www.huade.com.br)