

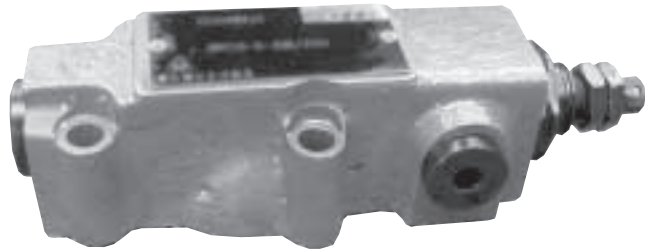


Catálogo de Productos

BEIJING HUADE HYDRAULIC INDUSTRIAL GROUP CO.,LTD.	Pressure remote relief valve, types DBT/DBWT		RE 25833/12.2004
	up to 31.5 MPa	up to 3L/min	Replaces: RE 25833/05.2001

Features:

- long distance remote control
- subplate mounting
- three adjustment elements:
 - Rotary knob
 - Hex. head screw with protective cap
 - Lockable rotary knob with scale



Function, section, symbols

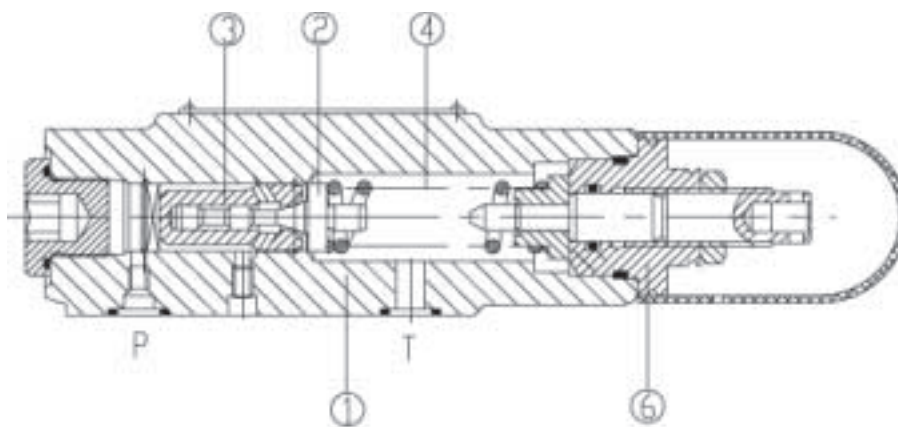
Types DBT and DBWT remote control pressure valves are pilot operated pressure relief valves.

Type DBT is apply to remote control the pressure of system.

Type DBT :

Type DBT consist mainly of the main valve (1), main spool (2), valve seat (3), and adjustment (6).

The pressure of system acts on the spool(2) via orifice. If the pressure exceeds the valve set at the spring, the pressure fluid drain to tank from port T(or drain external).



Type DBT...30/...

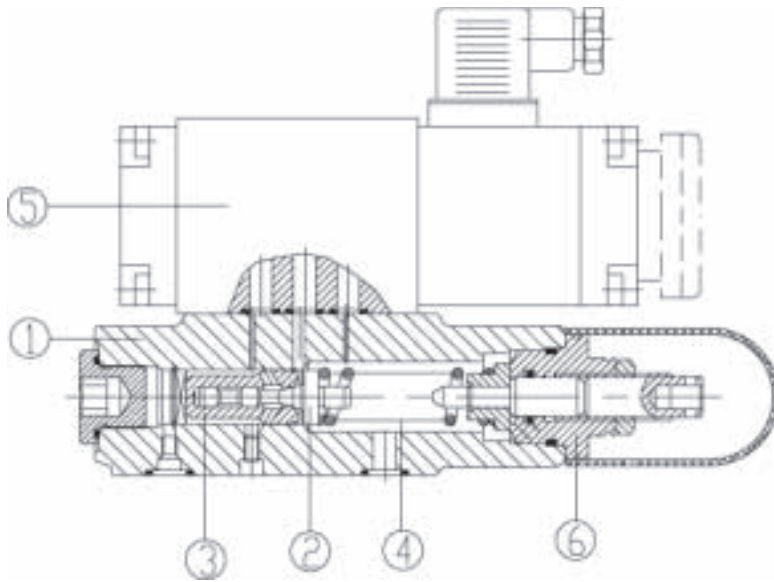
Symbol



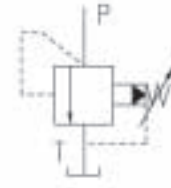
Type DBWT:

Type DBWT consist mainly of the main valve (1), main spool (2), valve seat (3), electrically operated valve (5), and adjustment (6).

Type DBWT is apply to remote control the pressure of system and drain by actuating the electrically operated valve.



symbol



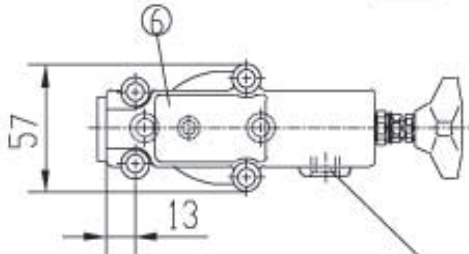
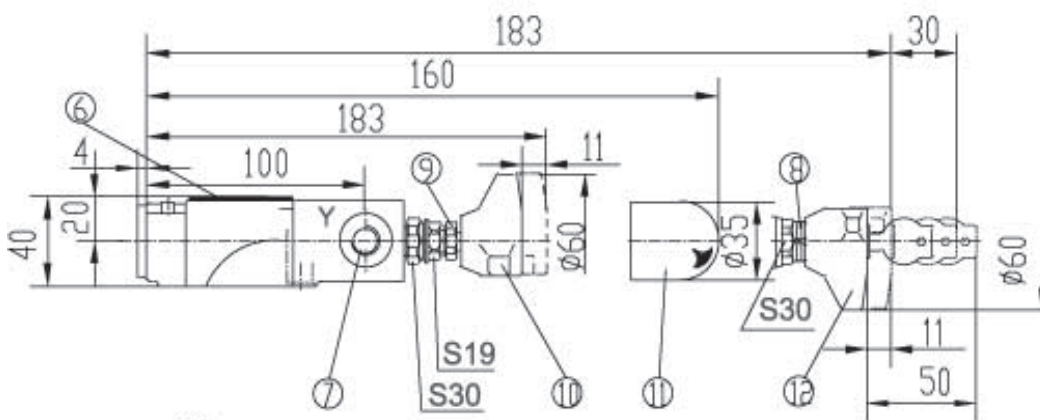
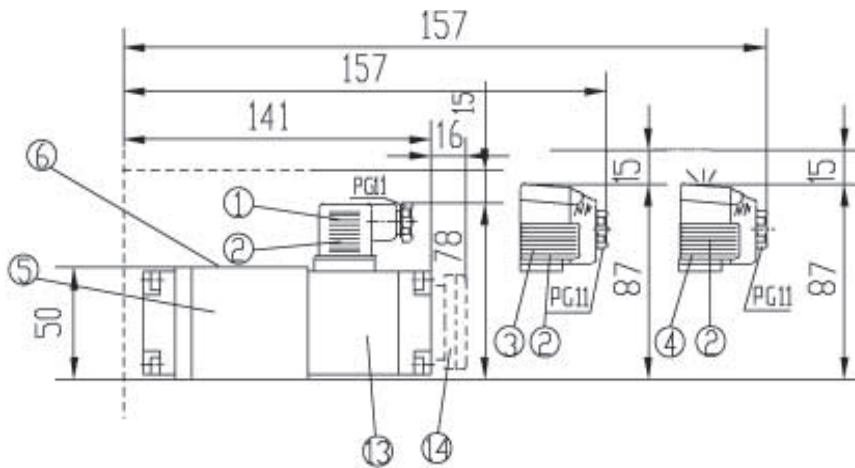
Type DBWT

ordering details

DB	T	- 30	B	/	/	*
Without electrically operated valve =No code With electrically operated valve =W		Further details in clear text				
Normally closed = A Normally open = B		No code = mineral oils V = phosphate ester				
Rotary knob = 1 Sleeve with hexagon and protective cap = 2 Lockable rotary knob with scale = 3		No code = British 2 = Metric				
Series 30 to 39 (30 to 39: unchanged installation and connection dimensions) =30		Z4 = Plug-in connector Z5 = Large Plug-in connector Z5L = Large Plug-in connector with light				
Technology of Beijing Huade Hydraulic = B		No code = Without hand override N = With hand override				
Settable pressure up to 10 MPa = 100 Settable pressure up to 31.5 MPa = 315		W220-50 = 220V 50Hz AC G24 = 24 V DC W220R =Solinoid commuting automatically 220V AC				

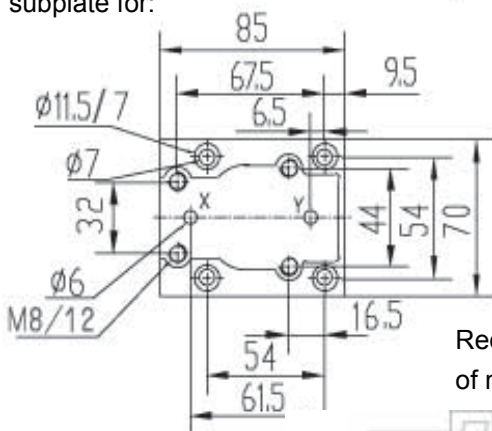
Technical data

Pressure fluid	Mineral oil (for NBR seal),or phosphate ester (for FPM seal)	
Temperature range (°C)	-30~+80	
Viscosity range (mm ² /S)	10~800	
max. flow (L/min)	3	
max. operating pressure (MPa)	31.5	
max. Setting pressure (MPa)	up to10 or 31.5	
Back pressure	DBT (MPa)	up to 31.5
	DBWT (MPa)	up to 10 (AC) ; up to 16 (DC)
Pilot valve	see directional valve WE5	



G1/4" /12 (DB...T...-30B...)
M14X1.5/12 (DB...T...-30B/.../2...)

subplate for:



Required surface finish
of mating piece

0.01/100mm



- 1 Plug-in connector without light "Z4"
- 2 Plug-in connector: colour gray
- 3 Plug-in connector large "Z5"
- 4 Plug-in connector with large light "Z5L"
- 5 Directional valves, type WE5
- 6 Nameplate
- 7 Port Y for drain external
- 8 Repeat adjusting scale
- 9 Only apply to 31.5 MPa
- 10 Adjustment element "1"
- 11 Adjustment element "2"
- 12 Adjustment element "3"
- 13 Solenoid "a"
- 14 Hand override, optional

Subplate G51/01, G51/02 ,see page 148

O-ring 9.25X1.78

Valve fixing screw (GB/T-70.1-2000)

4-M8X40-10.9

ANNOTATIONS :

HUADE AMÉRICA

CEP : 03162-020

RUA HIPÓDROMO 1445 – MOOCA, SÃO PAULO, SP, BRASIL

TEL : (11) 3186-5959

huade@huade.com.br

www.huade.com.br