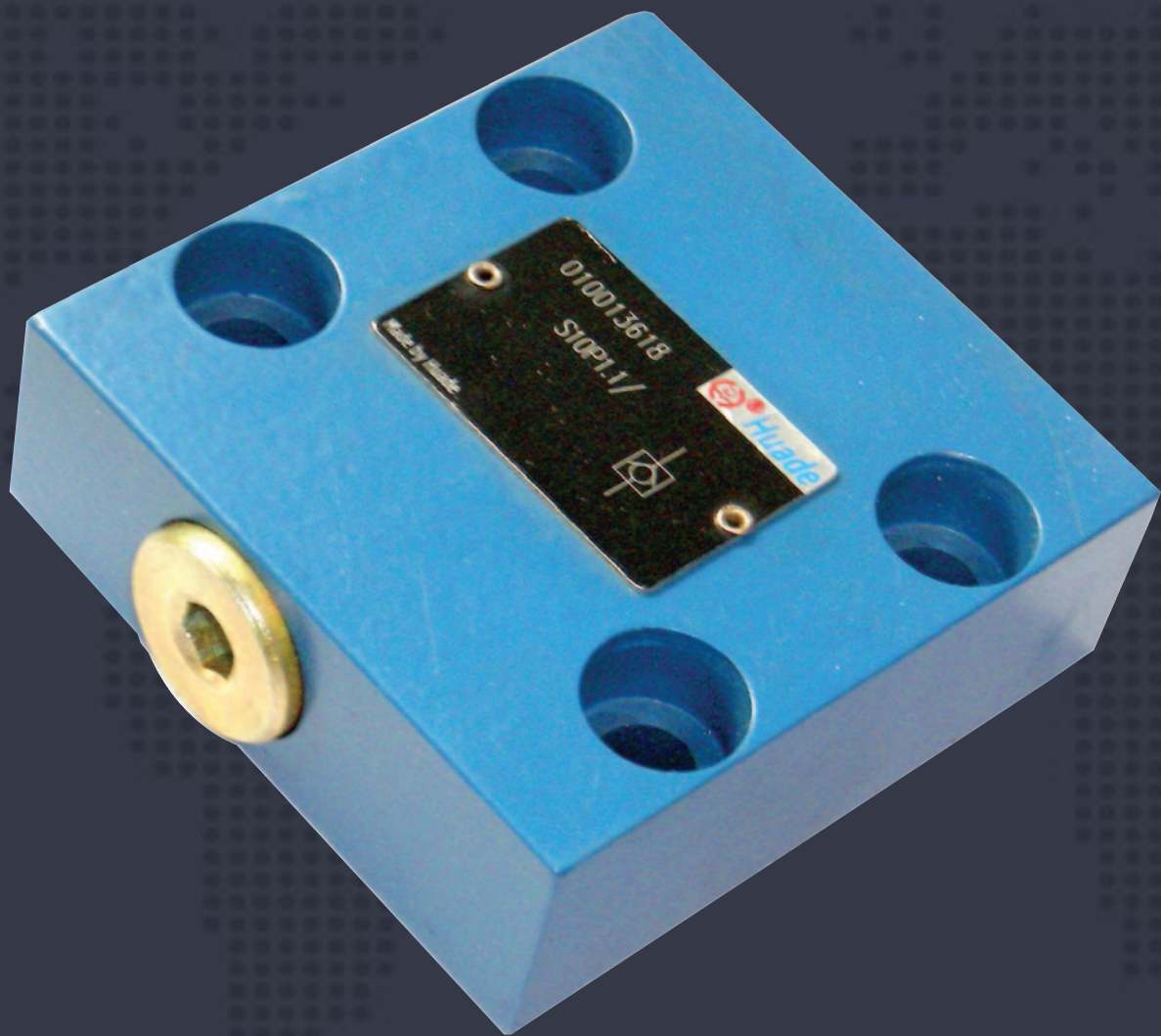




Catálogo de Productos



Check Valve type S...P...1B/ - RE20100

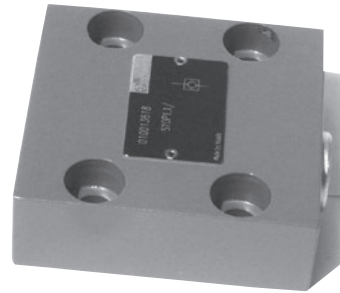
Sizes 10 20 30

up to 31.5 MPa

up to 400 L/min

Features:

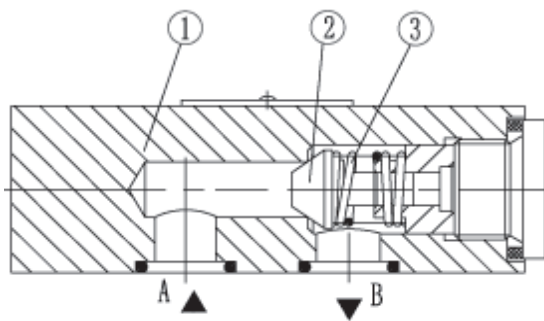
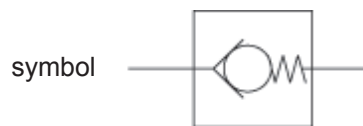
- Leakage-free closure in one direction
- 5 cracking pressure
- Subplate mouting



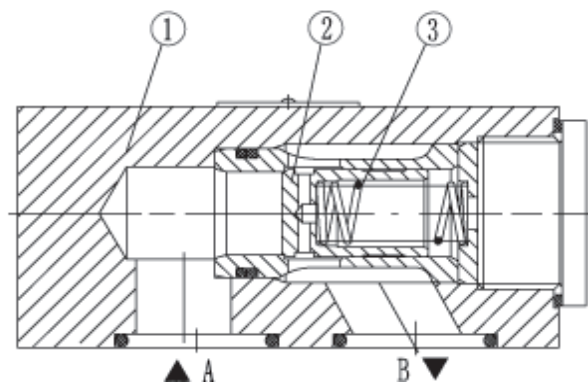
Function,section,symbol

The check valve type S has the task of, preferably closing a flow leakfree in one direction and to permit free flow in the opposite direction. It basically comprises of the housing (1), poppet (2) and the compression spring (3).

The stroke of the poppet (2), which is guided on its outside diameter, is limited by a mechanical stop. The built-in compression spring (3) supports the closing movement. Furthermore the compression spring (3) holds the poppet (2) in the closed position even when there is no flow through the valve.



Type S10P



Type S20, 30 P

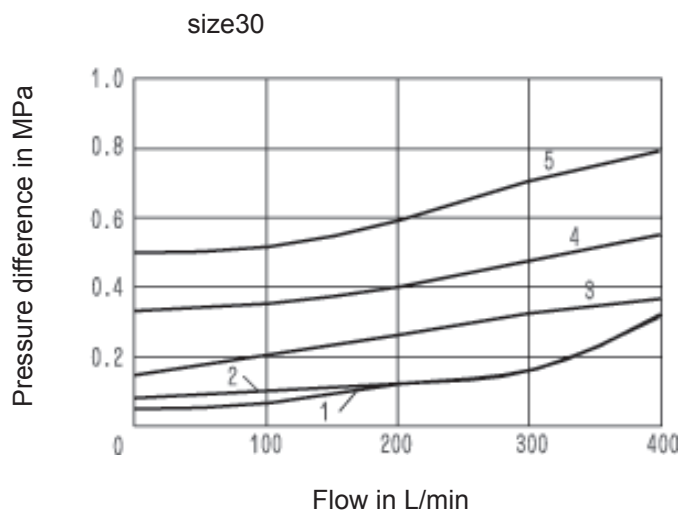
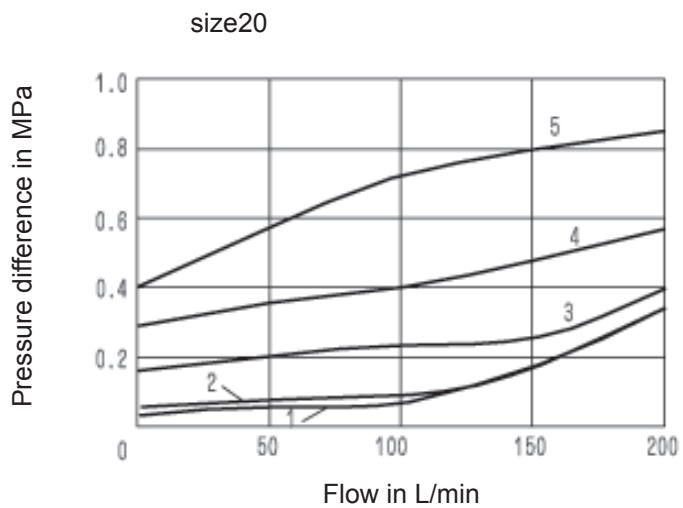
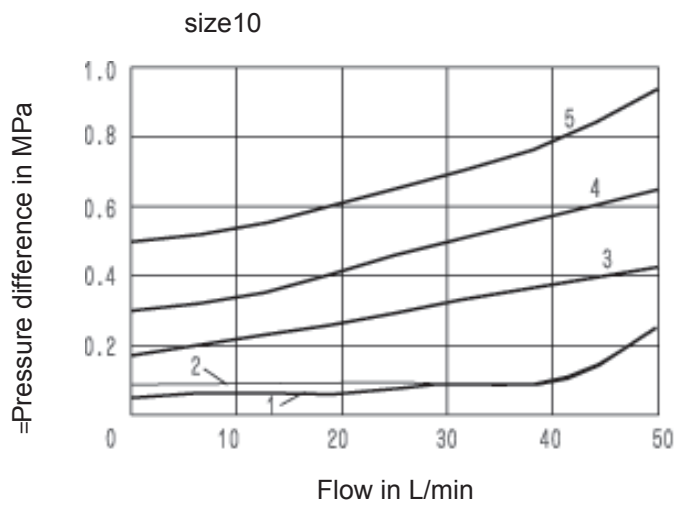
Ordering details

S		P		N	- /	*
Check valve =S						Further details in clear text
Size						No code = Mineral oils V = Phosphate ester
10 =10						
20 =20						
30 =30						
Subplate mouting = P						B = The technology of Beijing Huade Hydraulic
Cracking pressure 0.02 MPa = 1						1= Series 1 (1 to 9: unchanged installation and connection dimensions)
Cracking pressure 0.05 MPa = 2						
Cracking pressure 0.15 MPa = 3						
Cracking pressure 0.3 MPa = 4						
Cracking pressure 0.5 MPa = 5						

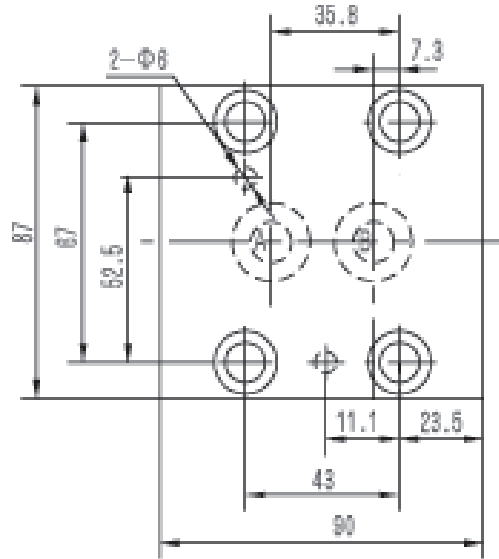
Technical data

Operating fluid		mineral oils or phosphate ester
Operating pressure (MPa)		PNKR
Viscosity range (mm ² /s)		OKU~RMM
Maximum flow (L/min)		See curves
Cracking pressure (MPa)		
Pressure fluid - temperature range (°C)		-30 ~ +80
Degree of contamination		maximum permissible degree of contamination of the pressure fluid is to NAS 1638 class 9. We, therefore, recommend a filter with a minimum retention rate of $\beta_{10} \geq 75$.

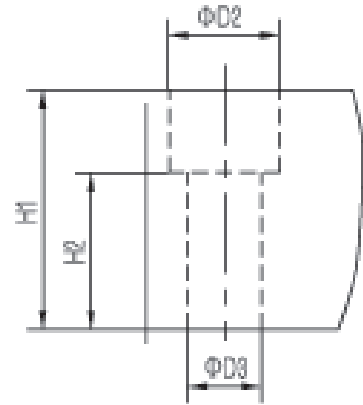
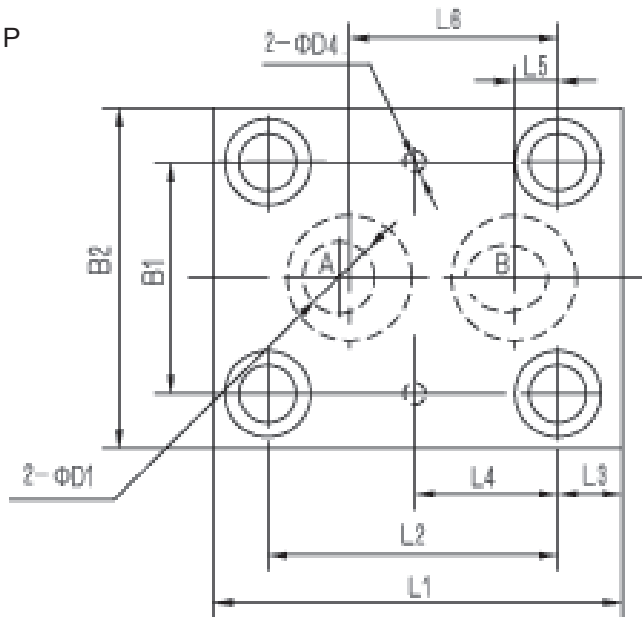
Characteristic curves (measured at $v = 41 \text{ mm}^2/\text{s}$ and $t = 50 \text{ }^\circ\text{C}$)



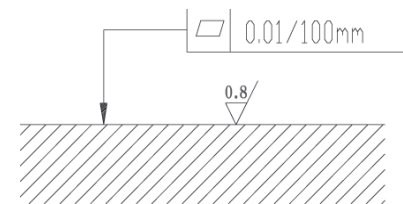
S 10 P



S 20.30 P



Required surface finish of mating piece



Size	Valve fixing screws (GB/T70.1-2000)	O-ring for ports A ,B
10	4-M10X35-10.9	17.12X2.62
20	4-M14X55-10.9	28.17X3.53
30	4-M18X60-10.9	34.52X3.53

Size	B1	B2	L1	L2	L3	L4	L5	L6	H1	H2	Φ D1	Φ D2	Φ D3	Φ D4
20	65	95	114	81	18	40.5	13	59	52	35	20	24	16	6
30	92	130	154	92	43.5	46	20.5	71.5	70	36	28	29	20	6

ANNOTATIONS :

HUADE AMÉRICA

CEP : 03162-020

RUA HIPÓDROMO 1445 – MOOCA, SÃO PAULO, SP, BRASIL

TEL : (11) 3186-5959

huade@huade.com.br

www.huade.com.br