



Catálogo de Productos

Check Valve with damp Type SZ8A - RE22000

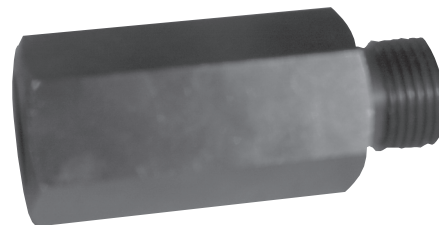
Size 8

up to 31.5MPa

up to 32 L/min

Features:

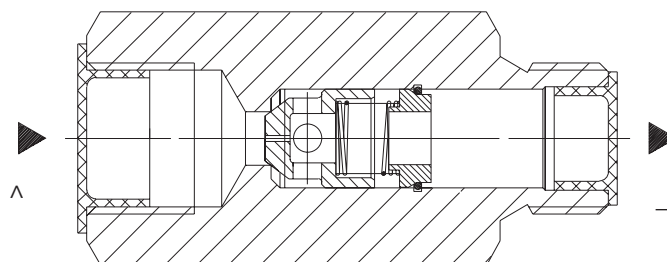
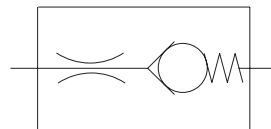
- For threaded connection
- Five cracking pressures, optional(see ordering details)



Function, section, symbol

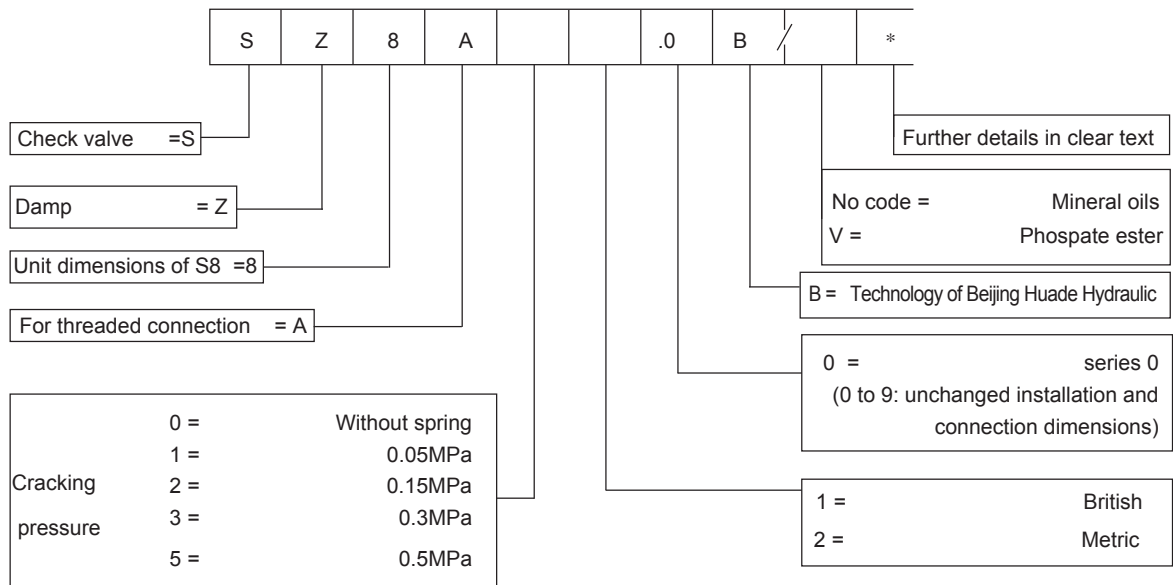
The Check valve with damp type SZ8A valve allow free flow in one direction and limit the flow in the opposite direction .The stroke of the poppet , which is guided on its outside diameter, is limited by a mechanical stop. The built-in compression spring supports the closing movement.
The Check valve with damp mainly used in the outlet of pump as back pressure and side through valve.

Symbols



Type SZ8A

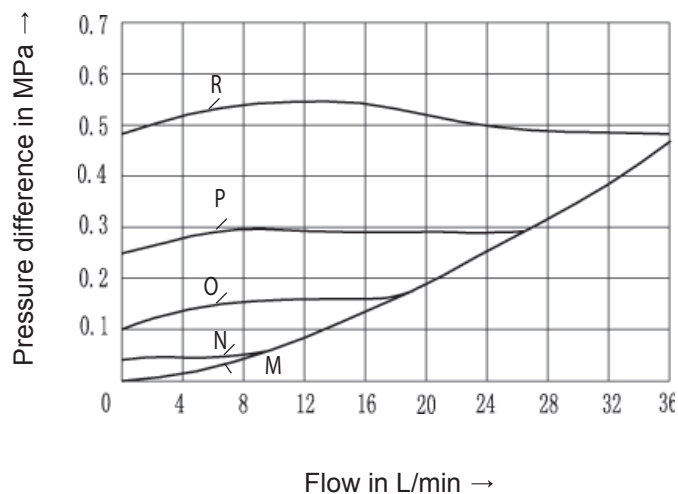
Ordering details

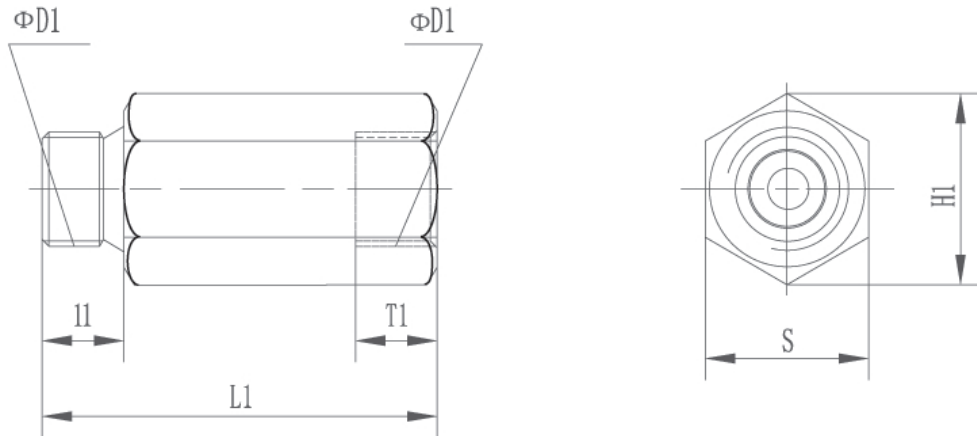


Technical data (For applications outside these parameters, please consult us !)

Hydraulic fluid		Mineral oil or Phosphate ester
Temperature range	(°C)	- 30 ~ + 80
Viscosity range	(mm ² /s)	2.8 ~ 500
Operating pressure	(MPa)	up to 31.5
Cracking pressure	(L /min)	See below Characteristic curves
Flow q _v max	(L /min)	

Characteristic curves (measured at v = 41 mm²/s and t = 50°C)





Size	Φ D1	H1	L1	T1	S	Weight (Kg)
8	3/8"	28	58	12	24	0.2

Notice

1. The fluid must be filtered. Minimum filter fineness is 20 μm .
2. The tank must be sealing up and an air filter must be installed on air entrance.
3. Products without subplate when leaving factory, if need them, please ordering specially.
4. Valve fixing screws must be high intensity level (class 10.9). Please select and use them according to the parameter listed in the sample book.
5. Roughness of surface linked with the valve is required to $\frac{0.8}{\sqrt{\quad}}$.
6. Surface finish of mating piece is required to 0.01/100mm.

ANNOTATIONS :

HUADE AMÉRICA

CEP : 03162-020

RUA HIPÓDROMO 1445 – MOOCA, SÃO PAULO, SP, BRASIL

TEL : (11) 3186-5959

huade@huade.com.br

www.huade.com.br