



Catálogo de Productos

Pressure sequence valve, direct operated, type DZ 10 DP

Features:

- For subplate mounting
- 4 pressure ratings
- 4 adjustment elements:
 - Rotary knob
 - Sleeve with hexagon and protective cap
 - Lockable rotary knob with scale
 - Rotary knob with scale
- With pressure gauge connection
- Check valve, optional
- mounting pattern to DIN 24 340, form D,ISO 5781 and CETOP-RP 121H



Function, section

The valve type DZ 10 DP is a direct operated pressure sequence valve.

It is used for pressure dependent sequencing of a second system.

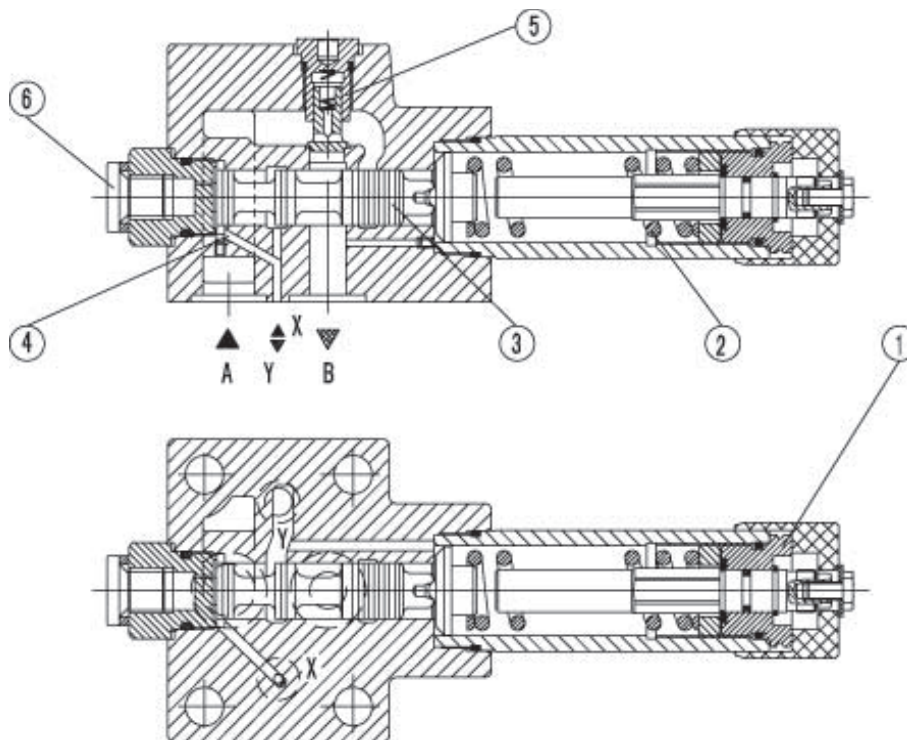
The sequence pressure is set via the adjusting element (1).

The compression spring (2) holds the control spool (3) in the start position, the valve is closed. The pressure in port A is present at the piston area of the control spool (3) opposite to the compression spring (2) via the control line (4).

When the pressure reaches the value set on compression spring (2), the control spool (3) is moved and opens the connection A to B. The system which is connected to port B is sequenced without the pressure in channel A falling.

The control signal is obtained via the control line (4) from port A or externally via connection X.

Depending on the valve application the leakage drain oil can be passed externally via connection Y or internally via B.



Type DZ10DP1-40B/...XY..

Symbols

with non-return valve	DZ10DP.-10B/... 	DZ10DP.-10B/...X.. 	DZ10DP.-10B/...Y.. 	DZ10DP.-10B/...XY..
without non-return valve	DZ10DP.-10B/...M... 	DZ10DP.-10B/...XM... 	DZ10DP.-10B/...YM... 	DZ10DP.-10B/...XYM...

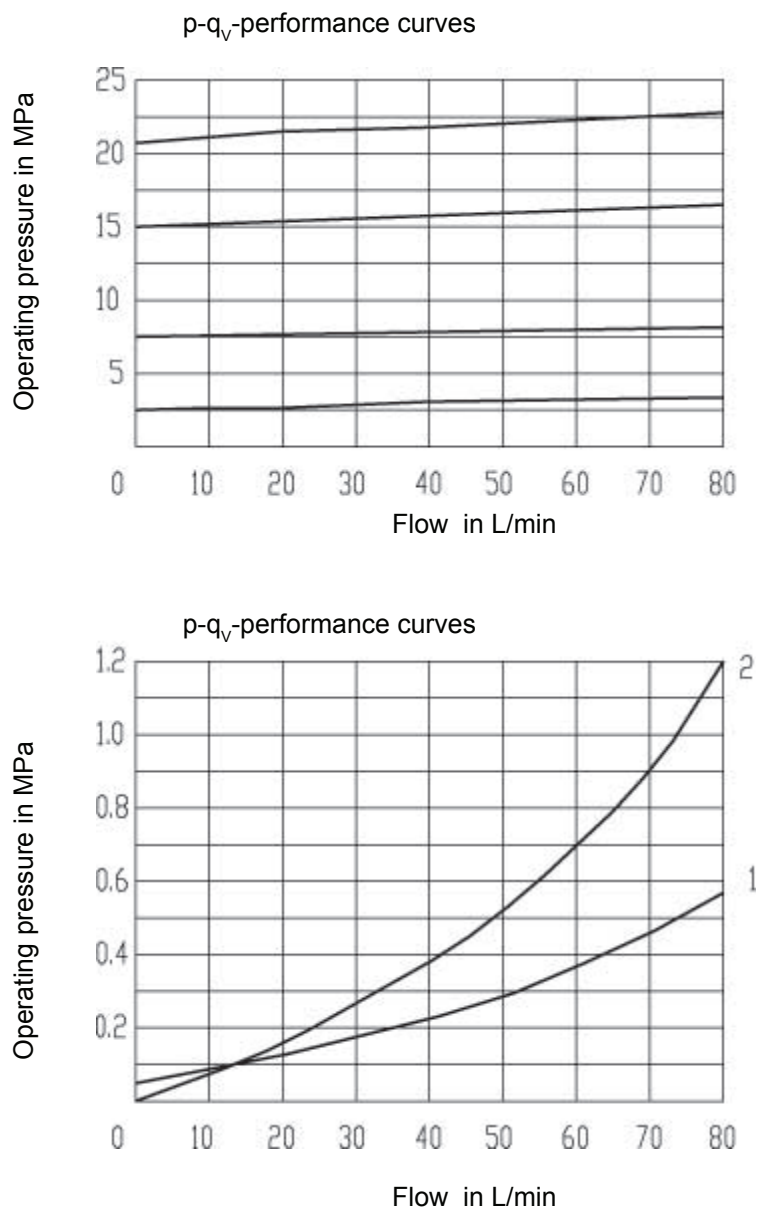
Ordering code

DZ	10	D	P	-	50	B	/				*
Size 10 =10		Direct operated = D		Subplate ports = P		Adjusting element		Series 40 to 49 = 40 (40 to 49, installation and connection dimensions remain unchanged)		Technology of Beijing Huade Hydraulic =B	
						Adjusting element Rotary knob = 1 Head screw with hexagon and protective cap = 2 Lockable rotary knob with scale = 3 Rotary knob with scale = 7				Further details in clear text	
										No code. = mineral oils V = phosphate ester	
										No code = with non-return valve M = without non-return valve	
										No code = pilot oil supply internal, drain internal X = pilot oil supply external, drain internal Y = pilot oil supply internal, drain external XY = pilot oil supply external, drain external	
										25= Max. sequence pressure 2.5 Mpa 75= Max. sequence pressure 7.5 Mpa 150= Max. sequence pressure 15.0 Mpa 210= Max. sequence pressure 21.0 Mpa 315= Max. sequence pressure 31.5 Mpa	

Technical Data

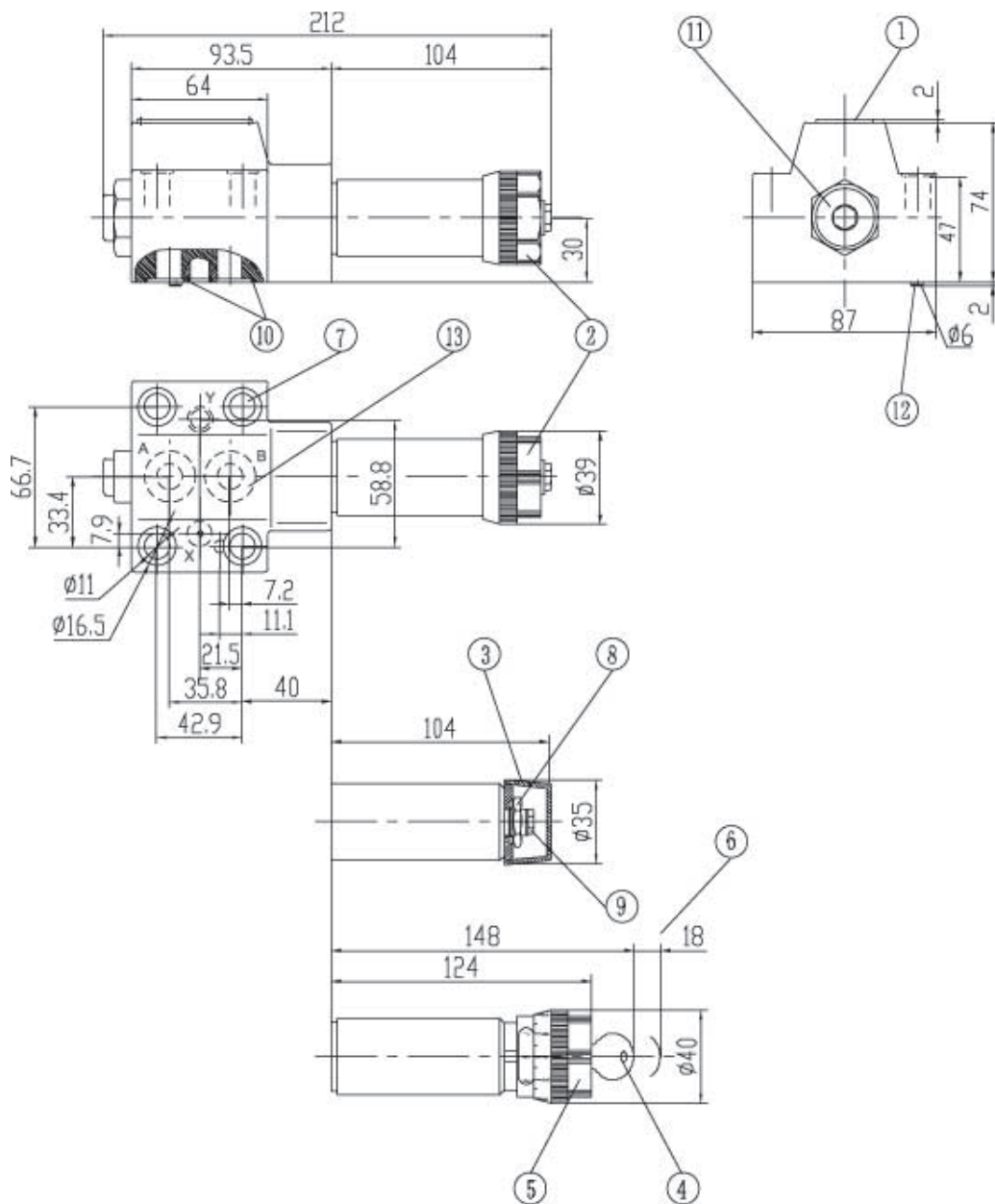
Inlet pressure, port P, A (X)	(MPa)	up to 31.5
Outlet pressure, port B	(MPa)	up to 21.0
Back pressure, port T (Y)	(MPa)	up to 16.0
Max. permissible flow	(L/min)	up to 60
Fluid		Mineral oil (for NBR seal), or phosphate ester (for FPM seal)
Viscosity range	(mm ² /s)	10~800
Fluid temperature rang	(°C)	-30 to +80
Fluid cleanliness	(µm)	Fluid cleanliness Maximum permissible degree of contamination of the fluid to NAS 1638 Class 9.
Max. flow	(L/min)	up to 80

Operating curves (measured at $v=41\text{mm}^2/\text{s}$ and $t=50^\circ\text{C}$)



1 Δ p-q_v-performance curve via check valve B to A

2 Δ p-q_v-performance curve A to B



- 1. Nameplate
- 2. Adjustment element 1
- 3. Adjustment element 2
- 4. Adjustment element 3
- 5. Adjustment element 7
- 6. Space required to remove key
- 7. Valve fixing screw holes
- 8. Lock nut 24 A/F
- 9. Hexagon 10 A/F
- 10. O-ring 17.12 x 2.62 for ports A and B
O-ring 9.25 x 1.78 for ports X and Y
- 11. Pressure gauge port G 1/4";
deep 12; allen key A/F 6
- 12 Locating pin

Subplates: see page 150

G460/01(G3/8")

G460/02(M18X1.5)

G461/01(G1/2")

G461/02(M22X1.5)

Valve fixing screws

M10 x 60-10.9

(GB/T70.1-2000);

Tightening torque $M_A = 75 \text{ Nm}$



Required surface finish
of mating piece

ANNOTATIONS :

HUADE AMÉRICA

CEP : 03162-020

RUA HIPÓDROMO 1445 – MOOCA, SÃO PAULO, SP, BRASIL

TEL : (11) 3186-5959

huade@huade.com.br

www.huade.com.br